



TEST REPORT

Report No.: ANT2303230042-010

Page 1 of 8

Applicant : Guangzhou Meika Leather Clothing Co., Ltd
Address : o. 957, 9th Floor, Tianhong Leather City, No. 51, Ziyuangang Road, Baiyun District, Guangzhou,China
Manufacturer's name : Guangzhou Meika Leather Clothing Co., Ltd
Address : o. 957, 9th Floor, Tianhong Leather City, No. 51, Ziyuangang Road, Baiyun District, Guangzhou,China




Report on the submitted samples said to be:

Sample Name : SCOOT'N'BAG SMALL
Trade Mark : N/A
Tested Style No. : Black
Series models : N/A
Sample reception time : March 23, 2023
Testing Period : March 23, 2023 ~ March 28, 2023
Test request : With reference to RoHS Directive (EU) 2015/863 amending Annex II to Directive 2011/65/EU.
Test method : Please refer to next page(s).
Results : Please refer to next page(s).

CONCLUSION

According to the customer's request, based on the performed tests on submitted sample, the result of Lead, Cadmium, Mercury, Hexavalent Chromium, PBBs, PBDEs, Dibutyl Phthalate (DBP), Benzyl butyl Phthalate (BBP), Bis(2-ethylhexyl) Phthalate (DEHP), Diisobutyl phthalate (DIBP) content comply with the limit as set of RoHS Directive (EU) 2015/863 amending Annex II to Directive 2011/65/EU.

Redact By


 Yetta


 Yinon

Reviewed By


 Sophia

Issued By

Date of issue April 03, 2023



TEST REPORT

Report No.: ANT2303230042-010

Page 2 of 8

A. EU RoHS Directive 2011/65/EU and its amendment Directives 2015/863/EU on Lead, Cadmium, Mercury, Hexavalent Chromium, PBBs, PBDEs, DBP, BBP, DEHP, DIBP content.

Tested part(s):

- (1) Cyan cloth (tarp)
- (2) Black cloth (tarp)
- (3) Blue woven cloth
- (4)* Black cloth

Results:

Test method:

Lead (Pb) & Cadmium (Cd) Content:

With reference to IEC 62321-5:2013, by acid digestion and analysis was performed by inductively coupled plasma atomic emission spectrometer (ICP-OES)

Mercury (Hg) Content:

With reference to IEC 62321-4:2013+AMD1:2017 CSV, by acid digestion and analysis was performed by inductively coupled plasma atomic emission spectrometer (ICP-OES)

Hexavalent Chromium (Cr⁶⁺) Content:

With reference to IEC 62321-7-2:2017, by alkaline digestion and analysis was performed by UV-visible spectrophotometer (UV-Vis)

PBBs & PBDEs Content:

With reference to IEC 62321-6:2015, by solvent extraction and analysis was performed by gas chromatographic-mass spectrometer (GC-MS)

BBP, DBP, DEHP & DIBP Content:

With reference to IEC 62321-8:2017, by solvent extraction and analysis was performed by gas chromatographic-mass spectrometer (GC-MS)

Item	Unit	MDL	Results				Limit
			(1)	(2)	(3)	(4)	
Lead Content (Pb)	mg/kg	2	N.D.	N.D.	N.D.	N.D.	1000
Cadmium Content (Cd)	mg/kg	2	N.D.	N.D.	N.D.	N.D.	100
Mercury Content (Hg)	mg/kg	2	N.D.	N.D.	N.D.	N.D.	1000
Hexavalent Chromium (Cr(VI)) (non-metal material)	mg/kg	8	N.D.	N.D.	N.D.	N.D.	1000

Note:

- N.D. = Not Detected or less than MDL
- MDL = Method Detection Limit
- mg/kg = ppm
- Flow chart appendix is included.
- Photo appendix is included.
- *=This sample's data is derived the report No.: ANT230309012-010.



TEST REPORT

Report No.: ANT2303230042-010

Page 3 of 8

Item	Unit	MDL	Results				Limit
			(1)	(2)	(3)	(4)	
Polybrominated Biphenyls (PBBs)							
Monobromobiphenyl	mg/kg	5	N.D.	N.D.	N.D.	N.D.	/
Dibromobiphenyl	mg/kg	5	N.D.	N.D.	N.D.	N.D.	/
Tribromobiphenyl	mg/kg	5	N.D.	N.D.	N.D.	N.D.	/
Tetrabromobiphenyl	mg/kg	5	N.D.	N.D.	N.D.	N.D.	/
Pentabromobiphenyl	mg/kg	5	N.D.	N.D.	N.D.	N.D.	/
Hexabromobiphenyl	mg/kg	5	N.D.	N.D.	N.D.	N.D.	/
Heptabromobiphenyl	mg/kg	5	N.D.	N.D.	N.D.	N.D.	/
Octabromobiphenyl	mg/kg	5	N.D.	N.D.	N.D.	N.D.	/
Nonabromodiphenyl	mg/kg	5	N.D.	N.D.	N.D.	N.D.	/
Decabromodiphenyl	mg/kg	5	N.D.	N.D.	N.D.	N.D.	/
Total content	mg/kg	/	N.D.	N.D.	N.D.	N.D.	1000
Polybrominated Diphenyl ethers (PBDEs)(Mon-Deca)							
Monobromodiphenyl ether	mg/kg	5	N.D.	N.D.	N.D.	N.D.	/
Dibromodiphenyl ether	mg/kg	5	N.D.	N.D.	N.D.	N.D.	/
Tribromodiphenyl ether	mg/kg	5	N.D.	N.D.	N.D.	N.D.	/
Tetrabromodiphenyl ether	mg/kg	5	N.D.	N.D.	N.D.	N.D.	/
Pentabromodiphenyl ether	mg/kg	5	N.D.	N.D.	N.D.	N.D.	/
Hexabromodiphenyl ether	mg/kg	5	N.D.	N.D.	N.D.	N.D.	/
Heptabromodiphenyl ether	mg/kg	5	N.D.	N.D.	N.D.	N.D.	/
Octabromodiphenyl ether	mg/kg	5	N.D.	N.D.	N.D.	N.D.	/
Nonabromodiphenyl ether	mg/kg	5	N.D.	N.D.	N.D.	N.D.	/
Decabromodiphenyl ether	mg/kg	5	N.D.	N.D.	N.D.	N.D.	/
Total content	mg/kg	/	N.D.	N.D.	N.D.	N.D.	1000

Note:

- N.D. = Not Detected or less than MDL
- MDL = Method Detection Limit
- mg/kg = ppm
- Flow chart appendix is included.
- Photo appendix is included.



TEST REPORT

Report No.: ANT2303230042-010

Page 4 of 8

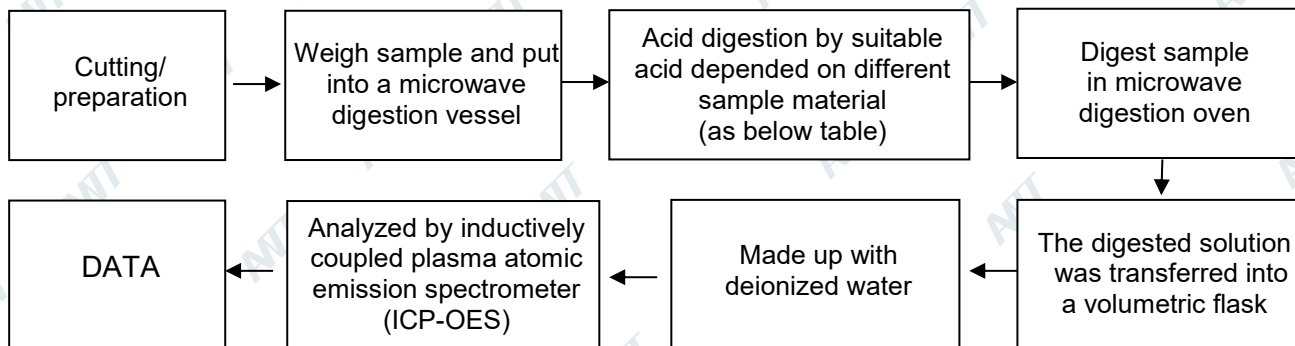
Item	CAS No.	Unit	MDL	Results				Limit
				(1)	(2)	(3)	(4)	
Dibutyl Phthalate (DBP)	84-74-2	mg/kg	30	N.D.	N.D.	N.D.	N.D.	1000
Benzyl butyl Phthalate (BBP)	85-68-7	mg/kg	30	N.D.	N.D.	N.D.	N.D.	1000
Bis(2-ethylhexyl) Phthalate (DEHP)	117-81-7	mg/kg	30	N.D.	N.D.	N.D.	N.D.	1000
Diisobutyl Phthalate (DIBP)	84-69-5	mg/kg	30	N.D.	N.D.	N.D.	N.D.	1000

Note:

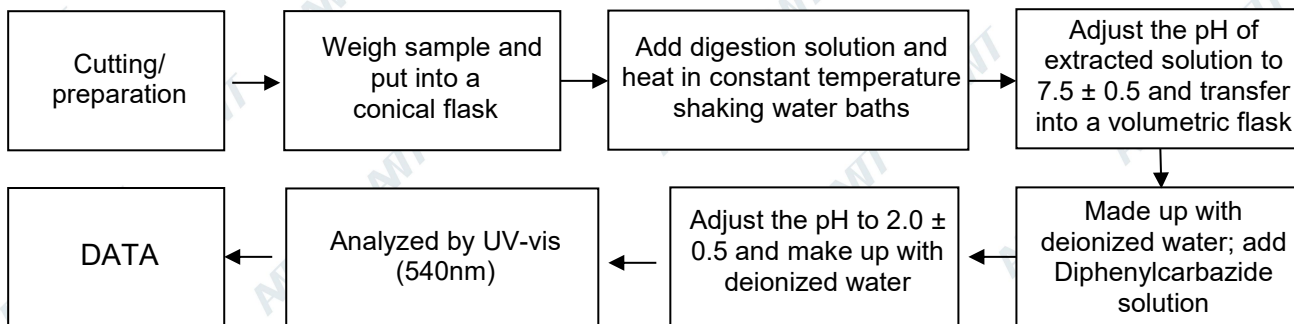
- N.D. = Not Detected or less than MDL
- MDL = Method Detection Limit
- mg/kg = ppm
- Flow chart appendix is included.
- Photo appendix is included.
- All test data in this report are derived the report No.: ANT2303230041-0100.

Appendix

1. Test Flow chart for Cd/Pb /Hg content



2. Test Flowchart for Cr⁶⁺ content (For non-metal material)



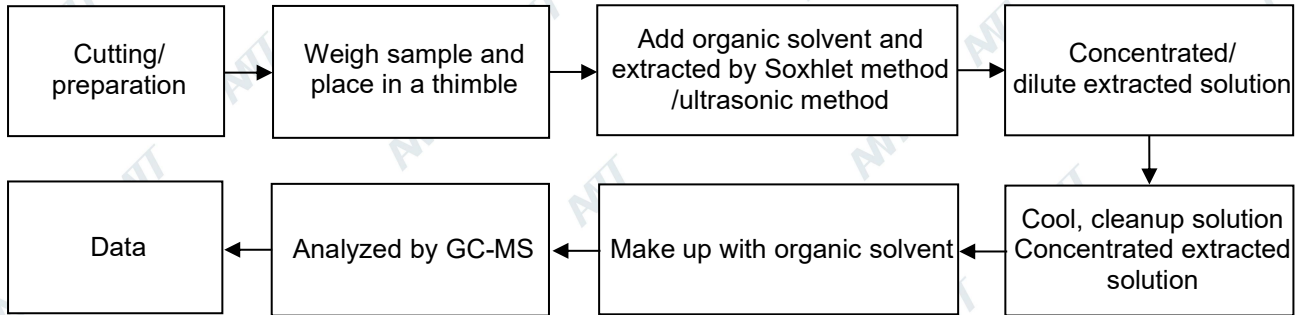


TEST REPORT

Report No.: ANT2303230042-010

Page 5 of 8

3. Test Flow chart for PBBs, PBDEs, DBP, BBP, DEHP & DIBP content



The photo of the sample





TEST REPORT

Report No.: ANT2303230042-010

Page 6 of 8

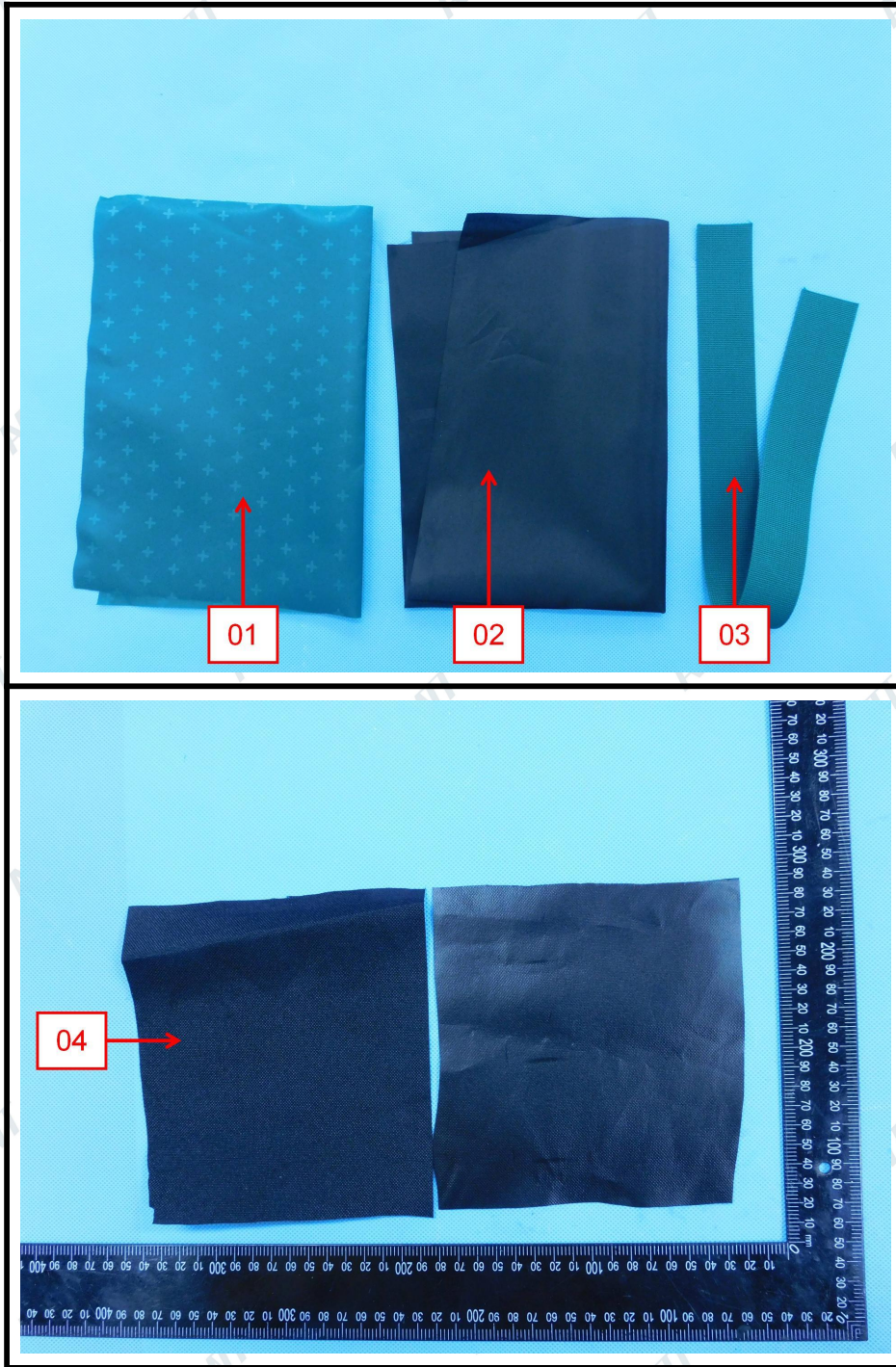




TEST REPORT

Report No.: ANT2303230042-010

Page 7 of 8



ANT authenticate the photo on original report only



TEST REPORT

Report No.: ANT2303230042-010

Page 8 of 8

Statement:

1. The test report is considered invalidated without approval signature, special seal on the perforation.
2. The result(s) shown in this report refer only to the sample(s) tested.
3. Without written approval of ANT, this report can't be reproduced except in full.
4. The sample(s) and sample information was/were provided by the client who should be responsible for the authenticity which ANT hasn't verified.
5. In case of any discrepancy between the English version and Chinese version of the testing reports(if generated), the Chinese version shall prevail.

*** End of Report ***