



Test Report



Report No.: PTC23062104802C-EN01

Issue Date: Jun. 27, 2023

Page 1 of 7

Applicant: Dongguan Deluxe Metal Industry Ltd

Address: no 280 Longquan Rd, Liaobu town, Dongguan city, Guangdong Province, China

The following merchandise was (were) submitted and identified by client as:

Sample Name: Black PP capsule

Country of Destination: FRANCE

Country of Origin: CHINA

Sample Received Date: Jun. 21, 2023

Completed Date: Jun. 27, 2023

Test Requested and Conclusion(s):

No.	Test Sample	Standard and Requirement	Conclusion(s)
1)	Submitted sample	According to Regulation EU 1935/2004/EC & EU 10/2011& (EU) 2020/1245 - Overall Migration - Specific Migration of Heavy metals - Specific migration of Primary Aromatic Amine (PAA)	PASS

Test Result(s): Please refer to next page(s).

Prepared by: Anne

Checked by: Crystal

Approved by: Miya

Anne

Crystal

Miya



This report is issued according to the general clauses in www.ptc-testing.com by PTC. Responsibility, guarantee and law restriction are defined in the general service clauses. The report is only responsible for the submitted sample(s) except as otherwise noted. The report could not be copied without permission of the company.

Precise Testing & Certification (Guangdong) Co., Ltd. (PTC)

Building 1, No. 6, Tongxin Road, Dongcheng Street, Dongguan, Guangdong, China.
Tel: 86-769-38808222 Fax: 86-769-38826111 [http:// www.ptc-testing.com](http://www.ptc-testing.com)



Test Report

Report No.:PTC23062104802C-EN01

Issue Date:Jun. 27, 2023

Page 2 of 7

Test Result(s):

1) According to Regulation EU 1935/2004/EC & EU 10/2011& (EU) 2020/1245

1.1) Overall migration

Method: EN 1186-1:2002 & EN 1186-3:2002 & EN 1186-14:2002

Test condition: 40°C for 30 minutes in 10% Ethanol / 3% Acetic acid / 95%Ethanol/Isooctane.

Test Item(s)	Unit	Limit(s)	RL	Result(s)	Conclusion(s)
				1	
10% Ethanol(w/v)	mg/dm ²	10	3	N.D.	PASS
3% Acetic acid(w/v)	mg/dm ²	10	3	3.5	PASS
95% Ethanol	mg/dm ²	10	3	N.D.	PASS
Isooctane	mg/dm ²	10	3	N.D.	PASS

- Note:**
1. mg/dm² = milligram per square decimeter.
 2. N.D. = Not Detected (< RL).
 3. RL = Reporting Limit.
 4. Solvents & test condition were selected based on Client's request.
 5. According to point 3.3.2 in Annex V to (EU) No. 10/2011 amended by (EU) No. 2020/1245, the overall migration in the second test shall not exceed the level observed in the first test, and the overall migration in the third test shall not exceed the level observed in the second test.
Compliance with the overall migration limit shall be verified on the basis of the level of the overall migration found in the third test.

This report is issued according to the general clauses in www.ptc-testing.com by PTC. Responsibility, guarantee and law restriction are defined in the general service clauses. The report is only responsible for the submitted sample(s) except as otherwise noted.
The report could not be copied without permission of the company.

Precise Testing & Certification (Guangdong) Co., Ltd. (PTC)

Building 1, No. 6, Tongxin Road, Dongcheng Street, Dongguan, Guangdong, China.
Tel: 86-769-38808222 Fax: 86-769-38826111 [http:// www.ptc-testing.com](http://www.ptc-testing.com)



Test Report

Report No.:PTC23062104802C-EN01

Issue Date:Jun. 27, 2023

Page 3 of 7

Test Result(s):

1.2) Specific Migration of heavy metals

Method: Refer to EN 13130-1:2004 (Total Immersion Method),analysis were performed by ICP-OES& UV-vis.

Test condition: 40℃ for 24 hour in 3% Acetic acid.

Test Item(s)	Unit	Limit(s)	RL	Result(s)
				1
Barium(Ba)	mg/kg	1	0.01	N.D.
Cobalt(Co)	mg/kg	0.05	0.01	N.D.
Copper(Cu)	mg/kg	5	0.01	N.D.
Iron(Fe)	mg/kg	48	0.01	N.D.
Lithium(Li)	mg/kg	0.6	0.01	N.D.
Manganese(Mn)	mg/kg	0.6	0.01	N.D.
Zinc(Zn)	mg/kg	5	0.01	N.D.
Aluminum (Al)	mg/kg	1	0.01	0.13
Nickel (Ni)	mg/kg	0.02	0.01	N.D.
Antimony(Sb)	mg/kg	0.04	0.01	N.D.
Arsenic(As)	mg/kg	N.D.	0.01	N.D.
Cadmium(Cd)	mg/kg	N.D.	0.002	N.D.
Chromium(Cr)	mg/kg	N.D.*	0.01	N.D.
Europium(Eu)	mg/kg	SUM:0.05	0.01	N.D.
Gadolinium(Gd)	mg/kg		0.01	N.D.
Lanthanum(La)	mg/kg		0.01	N.D.
Terbium(Tb)	mg/kg		0.01	N.D.
Lead(Pb)	mg/kg	N.D.	0.01	N.D.
Mercury(Hg)	mg/kg	N.D.	0.01	N.D.
Magnesium(Mg)	mg/kg	--	0.01	0.06
Potassium(K)	mg/kg	--	0.01	0.21
Sodium(Na)	mg/kg	--	0.01	0.24
Calcium(Ca)	mg/kg	--	0.01	0.68
Conclusion				PASS

- Note:**
1. mg/kg = milligram per kilogram (ppm).
 2. N.D. = Not Detected (< RL).

This report is issued according to the general clauses in www.ptc-testing.com by PTC. Responsibility, guarantee and law restriction are defined in the general service clauses. The report is only responsible for the submitted sample(s) except as otherwise noted. The report could not be copied without permission of the company.

Precise Testing & Certification (Guangdong) Co., Ltd. (PTC)

Building 1, No. 6, Tongxin Road, Dongcheng Street, Dongguan, Guangdong, China.
Tel: 86-769-38808222 Fax: 86-769-38826111 [http:// www.ptc-testing.com](http://www.ptc-testing.com)



Test Report

Report No.:PTC23062104802C-EN01

Issue Date:Jun. 27, 2023

Page 4 of 7

3. RL = Reporting Limit.
4. *To verify compliance with the Regulation, the detection limit of 0,01 mg/kg shall apply for total chromium. However if the operator that placed the material on the market can prove on the basis of pre-existing documentary evidence that the presence of hexavalent chromium in the material is excluded because it is not used or formed or during the entire production process, a limit for the total chromium of 3.6 mg/kg food shall apply.
5. Solvents & test condition were selected based on Client's request.
6. According to point 2.1.6 in (EU) No. 10/2011 amended by (EU) No. 2020/1245 ,compliance of the material or article shall than be verified on the basis of the level of the migration found in the third test and on the basis of the stability of the material or article from the first to the third migration test.

1.3) Specific migration of Primary Aromatic Amine (PAA)

Method:EN 13130-1: 2004, analysis by HPLC-MS-MS.

Test condition: 40°C for 24 hour in 3% Acetic acid.

Number	Test Item(s)	RL (mg/kg)	Limit (mg/kg)	Result (mg/kg)
				1
(1)	o-Toluidine	0.002	N.D.	N.D.
(2)	2-Methoxyaniline	0.002	N.D.	N.D.
(3)	p-Chloroaniline	0.002	N.D.	N.D.
(4)	p-Kresidine	0.002	N.D.	N.D.
(5)	2,4,5-Trimethylaniline	0.002	N.D.	N.D.
(6)	4-Chloro-o-Toluidine	0.002	N.D.	N.D.
(7)	2,4-Toluylenediamine	0.002	N.D.	N.D.
(8)	2,4-Diaminoanisole	0.002	N.D.	N.D.
(9)	2-Naphthylamine	0.002	N.D.	N.D.
(10)	2-Amino-4-nitrotoluene	0.002	N.D.	N.D.
(11)	4-Aminodiphenyl	0.002	N.D.	N.D.
(12)	p-Aminoazobenzene	0.002	N.D.	N.D.
(13)	4,4'-Oxydianiline	0.002	N.D.	N.D.
(14)	Benzidine	0.002	N.D.	N.D.
(15)	4,4'-Diaminodiphenylmethane	0.002	N.D.	N.D.
(16)	o-Aminoazotoluene	0.002	N.D.	N.D.

This report is issued according to the general clauses in www.ptc-testing.com by PTC. Responsibility, guarantee and law restriction are defined in the general service clauses. The report is only responsible for the submitted sample(s) except as otherwise noted.
The report could not be copied without permission of the company.

Precise Testing & Certification (Guangdong) Co., Ltd. (PTC)

Building 1, No. 6, Tongxin Road, Dongcheng Street, Dongguan, Guangdong, China.
Tel: 86-769-38808222 Fax: 86-769-38826111 [http:// www.ptc-testing.com](http://www.ptc-testing.com)



Test Report

Report No.:PTC23062104802C-EN01

Issue Date:Jun. 27, 2023

Page 5 of 7

Number	Test Item(s)	RL (mg/kg)	Limit (mg/kg)	Result (mg/kg)
				1
(17)	3,3'-Dimethyl-4,4'-diaminodiphenylmethane	0.002	N.D.	N.D.
(18)	3,3'-Dimethylbenzidine	0.002	N.D.	N.D.
(19)	4,4'-Thiodianiline	0.002	N.D.	N.D.
(20)	3,3'-Dichlorobenzidine	0.002	N.D.	N.D.
(21)	4,4'-Methylene-bis-(2-chloraniline)	0.002	N.D.	N.D.
(22)	3,3'-Dimethoxybenzidine	0.002	N.D.	N.D.
(23)	1,3-Phenyldiamine	0.002	N.D.	N.D.
(24)	Other Primary Aromatic Amine	0.01	Sum≤0.01	N.D.
Conclusion				PASS

Test condition: 40℃ for 24 hour in 95% Ethanol.

Number	Test Item(s)	RL (mg/kg)	Limit (mg/kg)	Result (mg/kg)
				1
(1)	o-Toluidine	0.002	N.D.	N.D.
(2)	2-Methoxyaniline	0.002	N.D.	N.D.
(3)	p-Chloroaniline	0.002	N.D.	N.D.
(4)	p-Kresidine	0.002	N.D.	N.D.
(5)	2,4,5-Trimethylaniline	0.002	N.D.	N.D.
(6)	4-Chloro-o-Toluidine	0.002	N.D.	N.D.
(7)	2,4-Toluylenediamine	0.002	N.D.	N.D.
(8)	2,4-Diaminoanisole	0.002	N.D.	N.D.
(9)	2-Naphthylamine	0.002	N.D.	N.D.
(10)	2-Amino-4-nitrotoluene	0.002	N.D.	N.D.
(11)	4-Aminodiphenyl	0.002	N.D.	N.D.
(12)	p-Aminoazobenzene	0.002	N.D.	N.D.
(13)	4,4'-Oxydianiline	0.002	N.D.	N.D.
(14)	Benzidine	0.002	N.D.	N.D.
(15)	4,4'-Diaminodiphenylmethane	0.002	N.D.	N.D.
(16)	o-Aminoazotoluene	0.002	N.D.	N.D.
(17)	3,3'-Dimethyl-4,4'-diaminodiphenylmethane	0.002	N.D.	N.D.
(18)	3,3'-Dimethylbenzidine	0.002	N.D.	N.D.

This report is issued according to the general clauses in www.ptc-testing.com by PTC. Responsibility, guarantee and law restriction are defined in the general service clauses. The report is only responsible for the submitted sample(s) except as otherwise noted. The report could not be copied without permission of the company.

Precise Testing & Certification (Guangdong) Co., Ltd. (PTC)

Building 1, No. 6, Tongxin Road, Dongcheng Street, Dongguan, Guangdong, China.
Tel: 86-769-38808222 Fax: 86-769-38826111 [http:// www.ptc-testing.com](http://www.ptc-testing.com)



Test Report

Report No.:PTC23062104802C-EN01

Issue Date:Jun. 27, 2023

Page 6 of 7

Number	Test Item(s)	RL (mg/kg)	Limit (mg/kg)	Result (mg/kg)
				1
(19)	4,4'-Thiodianiline	0.002	N.D.	N.D.
(20)	3,3'-Dichlorobenzidine	0.002	N.D.	N.D.
(21)	4,4'-Methylene-bis-(2-chloraniline)	0.002	N.D.	N.D.
(22)	3,3'-Dimethoxybenzidine	0.002	N.D.	N.D.
(23)	1,3-Phenylenediamine	0.002	N.D.	N.D.
(24)	Other Primary Aromatic Amine	0.01	Sum≤0.01	N.D.
Conclusion				PASS

- Note:**
1. mg/kg = milligram per kilogram
 2. N.D. = Not Detected (< RL).
 3. RL = Reporting Limit.
 4. Solvents & test condition were selected based on Client's request.
 5. According to point 2.1.6 in (EU) No. 10/2011 amended by (EU) No. 2020/1245 ,compliance of the material or article shall than be verified on the basis of the level of the migration found in the third test and on the basis of the stability of the material or article from the first to the third migration test.

Test Material List

The following materials apply only to the samples submitted for chemical testing

Material No.	Description	Location
1	Black PP	Whole

This report is issued according to the general clauses in www.ptc-testing.com by PTC. Responsibility, guarantee and law restriction are defined in the general service clauses. The report is only responsible for the submitted sample(s) except as otherwise noted.
The report could not be copied without permission of the company.

Precise Testing & Certification (Guangdong) Co., Ltd. (PTC)

Building 1, No. 6, Tongxin Road, Dongcheng Street, Dongguan, Guangdong, China.
Tel: 86-769-38808222 Fax: 86-769-38826111 [http:// www.ptc-testing.com](http://www.ptc-testing.com)



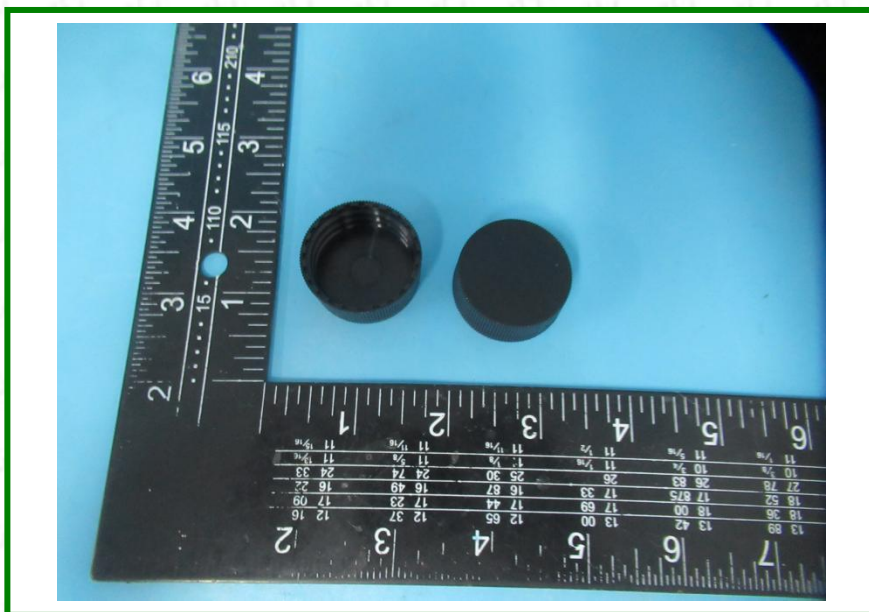
Test Report

Report No.:PTC23062104802C-EN01

Issue Date:Jun. 27, 2023

Page 7 of 7

Photo of Sample:



End of Report

This report is issued according to the general clauses in www.ptc-testing.com by PTC. Responsibility, guarantee and law restriction are defined in the general service clauses. The report is only responsible for the submitted sample(s) except as otherwise noted. The report could not be copied without permission of the company.

Precise Testing & Certification (Guangdong) Co., Ltd. (PTC)
Building 1, No. 6, Tongxin Road, Dongcheng Street, Dongguan, Guangdong, China.
Tel: 86-769-38808222 Fax: 86-769-38826111 [http:// www.ptc-testing.com](http://www.ptc-testing.com)