



TEST REPORT

LAB NO. : (9324)060-0755-R1
DATE : Apr 12, 2024
PAGE : 1 OF 20

The report is amendment of and supersedes the previous report (9324)060-0755 dated Mar 14, 2024

APPLICANT : **SUN LIGHT LIGHTING INDUSTRIAL CO., LTD**
DONGSHAN KAPOK INDUSTRIAL PARK, QISHI TOWN,
DONGGUAN CITY, GUANGDONG PROVINCE, CHINA

CONTACT PERSON : 李钢

DATE OF SUBMISSION : Feb 29, 2024

TEST PERIOD : Feb 29, 2024 to Mar 14, 2024

SAMPLE DESCRIPTION : T17-CL-AL、G25-CL-BR、R39-REF-BR、R45-REF-BR、
R39-REF-AL-E14、T22-CL-BR-E12、T22-CL-BR-E17、
S35-CL-BR-E17、G50-CL-BR、C32-CL-NP、C32-FR-NP、
C7-CL-BR、C7-CL-NP、A15-CL-BR(OVEN)、
T22-CL-BR(OVEN)、T25-CL-BR(OVEN)、T25-CL-AL、
N7-CL-BR/NP、ST6-CL-NP、C18-CL-NP-FK、T20-CL-NP、
T13-CL-NP、A19-CL-AL、T25-CL-B22、A15-CL-NP、
A15-CL-AL、F15-IRRI-AL、A15-WH-AL、A15-FR-AL、
C32-CL-AL、BA9-CL-AL、G50-CL-AL、F15-CL-AL、
C7-CL-FL-NP、S35-FR-NP、G60-BS-BR、P45-FR-AL、
T25-CL-BR、R39-REF-AL、A15-DB-AL、F15-WH-AL、
T18-CL-NP、C9-CL-FL-NP、M50-WH-AL、ST45-CL-BR、
T22-CL-BR、P45-FR-AL、T29-CL-OVEN、
T22-CL-NP (OVEN)、C9-CL、C65-CL、G30-CL、G40-CL、
C7-CL-SIL、SL-BB-LIGHT、P45-CL-OVEN、S45-CL、
C7-Transparent Multi、C7-Ceramic Multi.
Product End Use: 白炽灯泡

Color: 多种颜色

Style no. / Model no.: /

P.O. No.: /

Country of Origin: /

Country of Destination: /

BUYER : /

MANUFACTURER : /

RW

Bureau Veritas Consumer Products Services
(Guangzhou) Co., Ltd
No. 183, Shinan Road, Meilin Plaza, Dongchong,
Nansha, Guangzhou, Guangdong Province, China
511453
Tel: (86) 20 2290 2088 Fax: (86) 20 3490 9303
Email: BVCPs_pyinfo@bureauveritas.com
Website: cps.bureauveritas.com

This report is governed by, and incorporates by reference, the Conditions of Testing as posted at the date of issuance of this report at <http://www.bureauveritas.com/home/about-us/our-business/cps/about-us/terms-conditions/> and is intended for your exclusive use. Any copying or replication of this report to or for any other person or entity, or use of our name or trademark, is permitted only with our prior written permission. This report sets forth our findings solely with respect to the test samples identified herein. The results set forth in this report are not indicative or representative of the quality or characteristics of the lot from which a test sample was taken or any similar or identical product unless specifically and expressly noted. Our report includes all of the tests requested by you and the results thereof based upon the information that you provided to us. Measurement uncertainty is only provided upon request for accredited tests. Statements of conformity are based on simple acceptance criteria without taking measurement uncertainty into account, unless otherwise requested in writing. You have 60 days from date of issuance of this report to notify us of any material error or omission caused by our negligence or if you require measurement uncertainty; provided, however, that such notice shall be in writing and shall specifically address the issue you wish to raise. A failure to raise such issue within the prescribed time shall constitute your unqualified acceptance of the completeness of this report, the tests conducted and the correctness of the report contents.

The content of this PDF file is in accordance with the original issued reports for reference only.
This Test Report cannot be reproduced, except in full, without prior written permission of the company.



LAB NO. : (9324)060-0755-R1
DATE : Apr 12, 2024
PAGE : 2 OF 20

SUMMARY OF TEST RESULTS

TEST REQUESTED	CONCLUSION	REMARK
Compliance Test - European Parliament and Council Directive 2011/65/EU on the Restriction of the Use of Certain Hazardous Substances in Electrical and Electronic Equipment (RoHS) with its Amendments (EU) 2015/863	PASS	

BUREAU VERITAS CONSUMER PRODUCTS SERVICES (GUANGZHOU) CO., LTD

KENNY WANG
OPERATION MANAGER

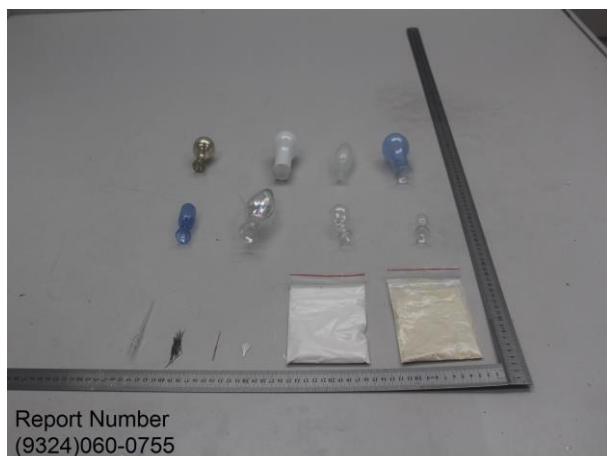
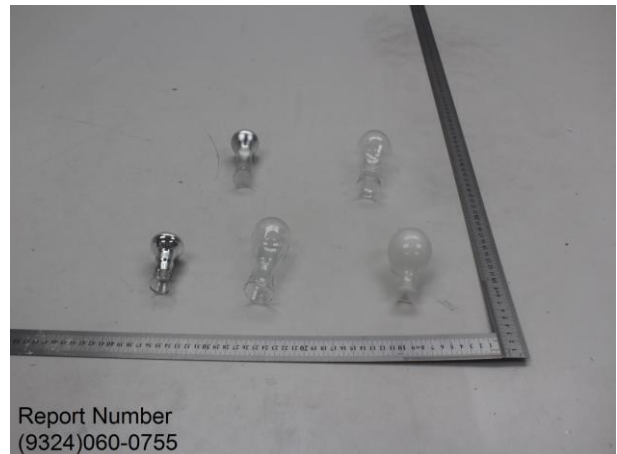
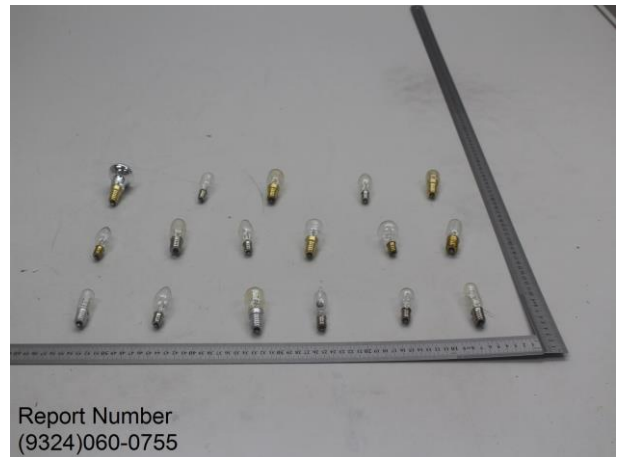
REMARK

If there are questions or concerns on this report, please contact the following persons:

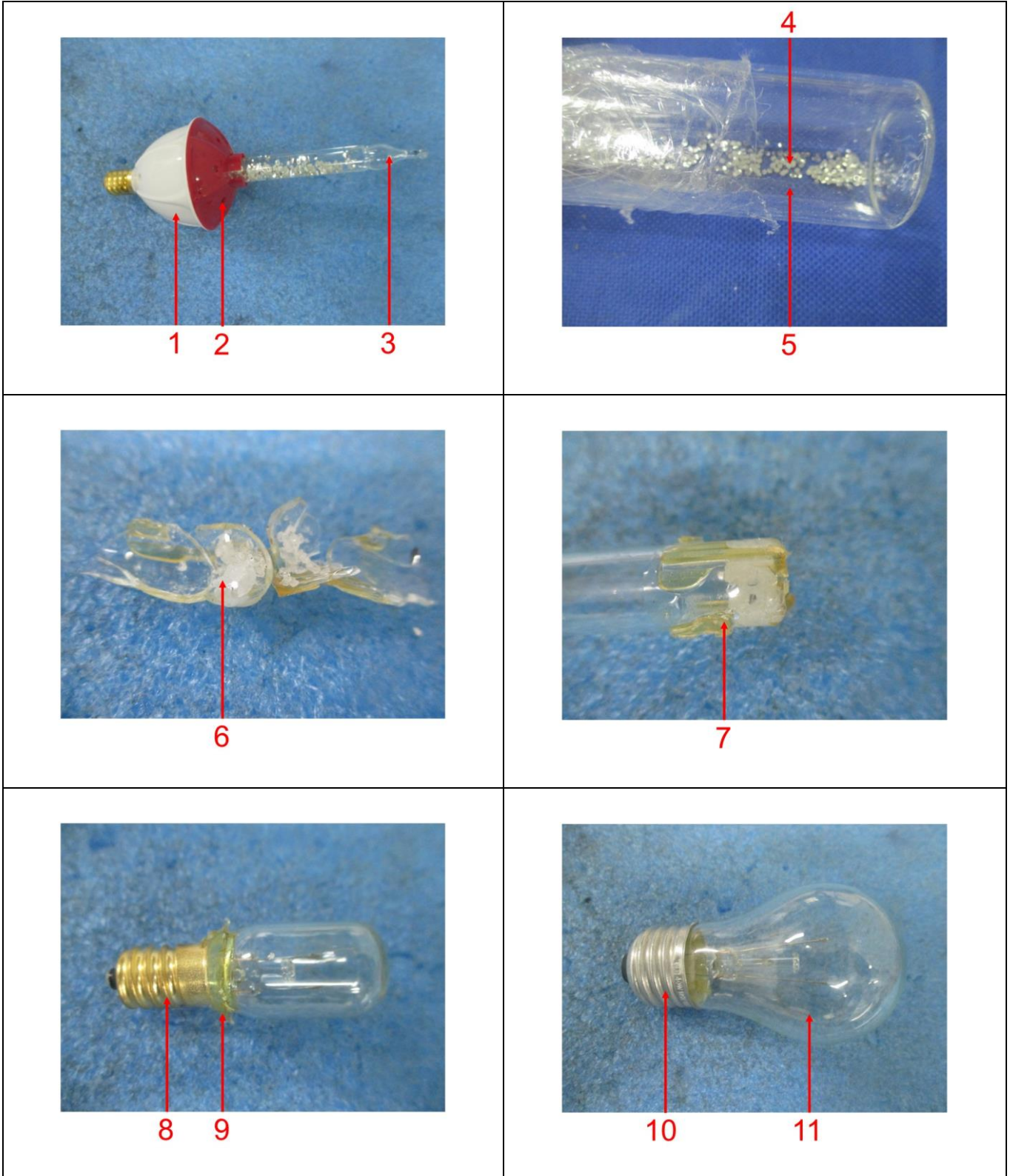
- a) GENERAL TEL: (86)755 83437287
FAX: (86)755 83439100
- b) BUSINESS SZ TEL: (86)755 21534695
FAX: (86)755 83439100
- BUSINESS GZ TEL: (86) 20 87148525
FAX: (86) 20 87148528

EMAIL: eechemical.sc@bureauveritas.com
WEBSITE: cps.bureauveritas.cn

Photo of the Submitted Sample



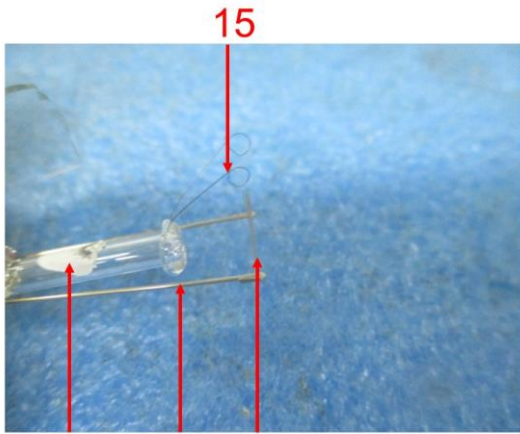
Photograph of test item(s)





**BUREAU
VERITAS**

LAB NO. : (9324)060-0755-R1
DATE : Apr 12, 2024
PAGE : 5 OF 20



12 13 14



16



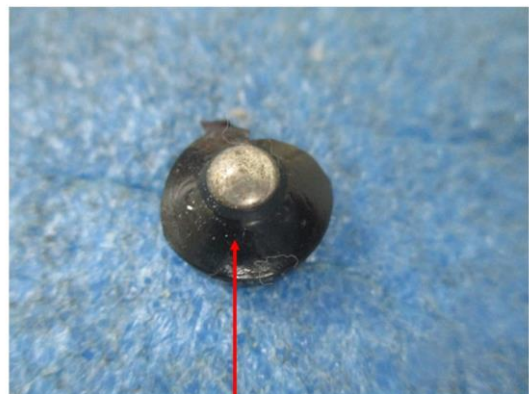
17
18



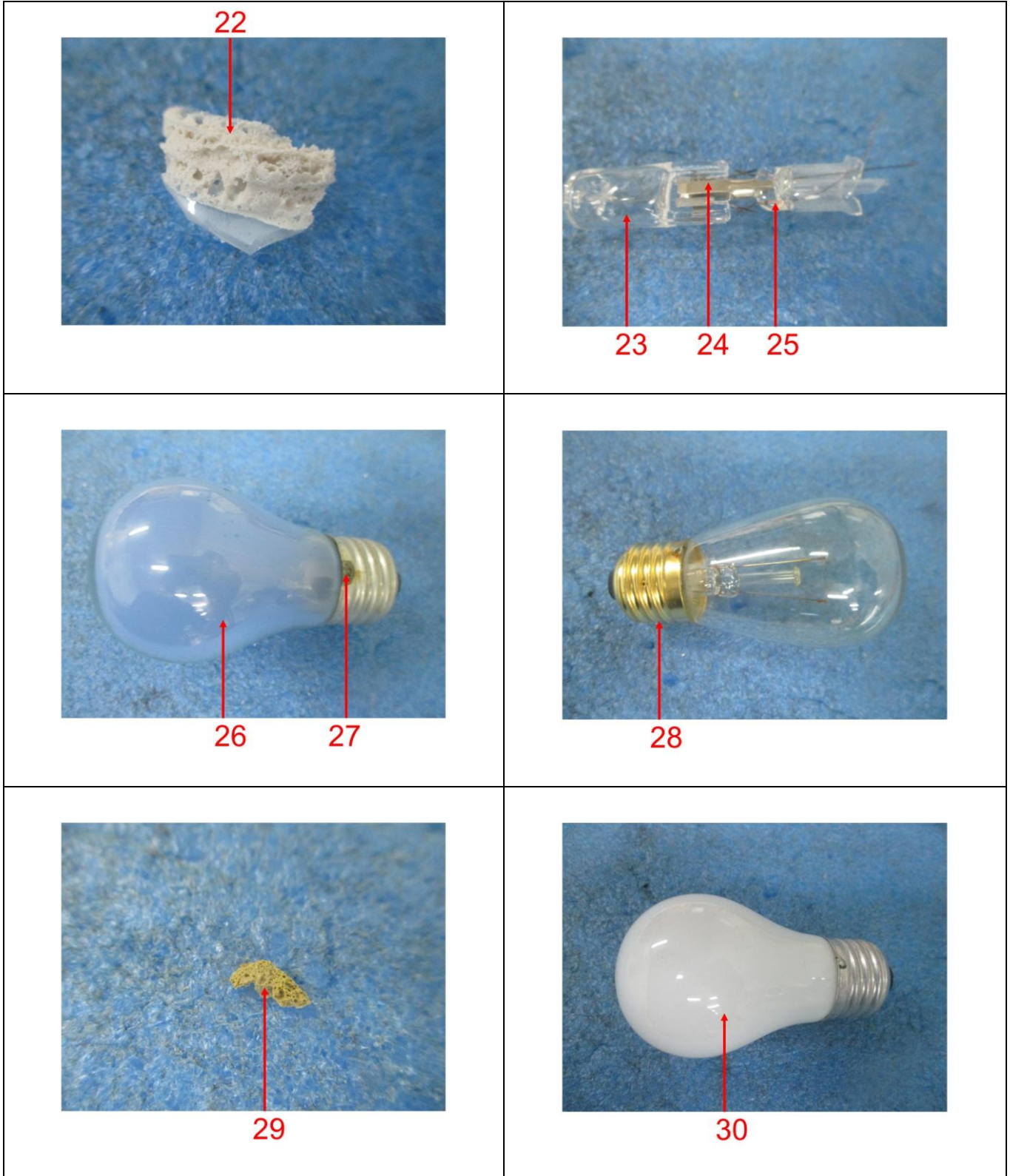
19

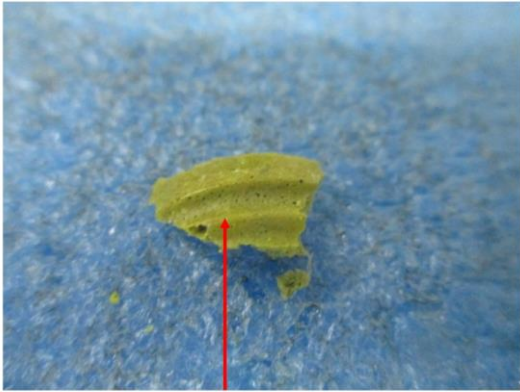


20



21

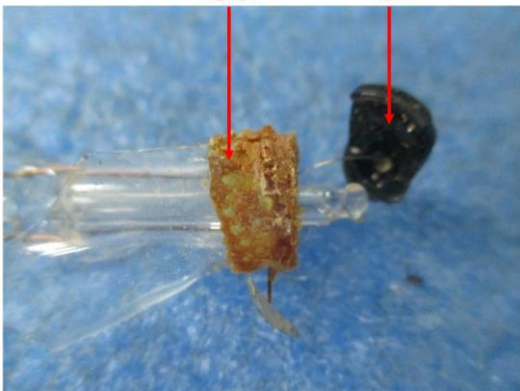




31



32



33

34



35



36

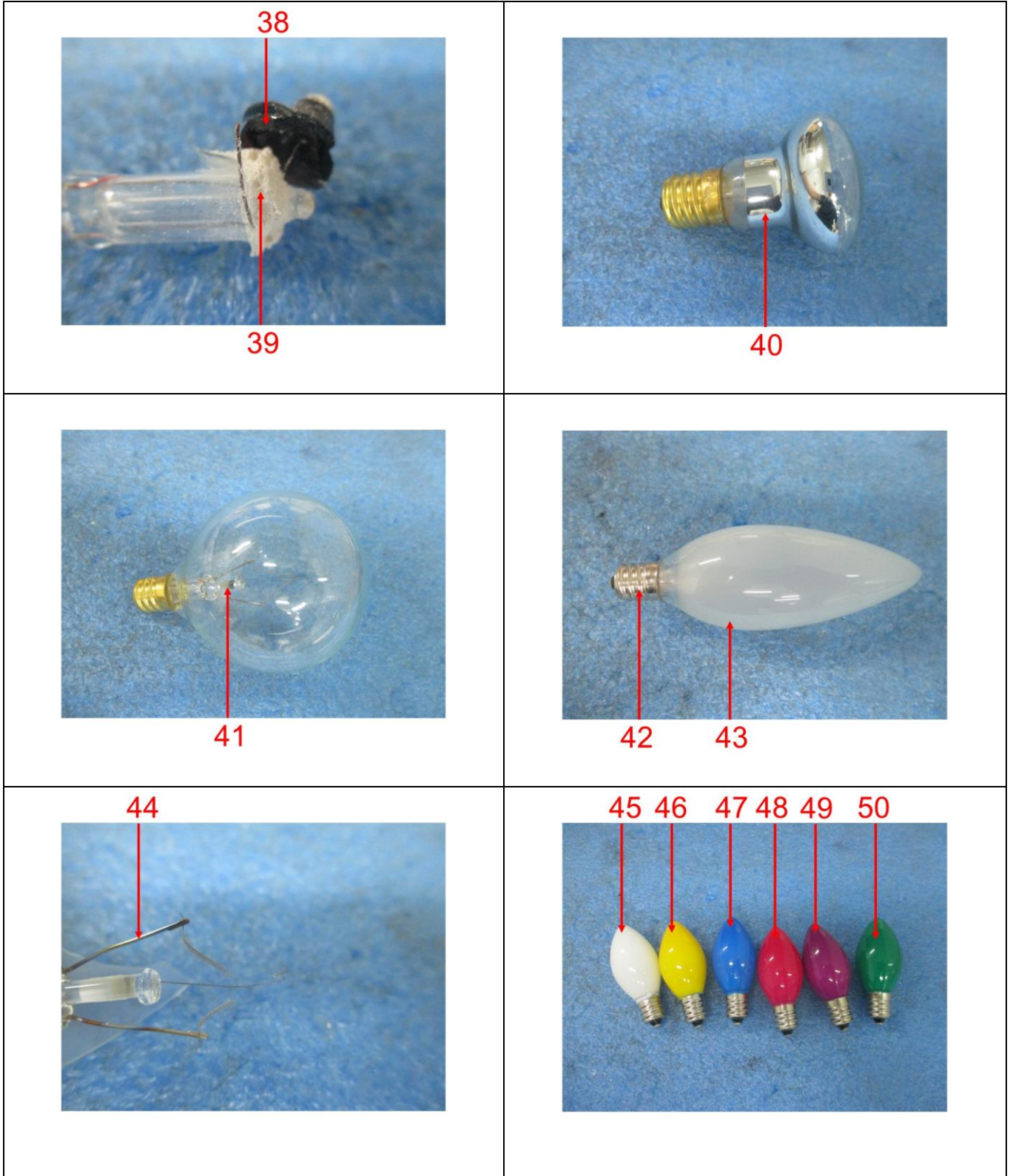


37



**BUREAU
VERITAS**

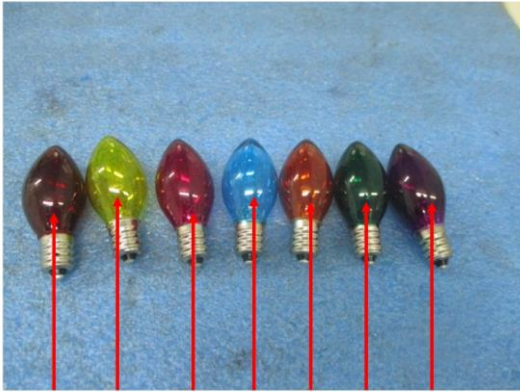
LAB NO. : (9324)060-0755-R1
DATE : Apr 12, 2024
PAGE : 8 OF 20





**BUREAU
VERITAS**

LAB NO. : (9324)060-0755-R1
DATE : Apr 12, 2024
PAGE : 9 OF 20



51 52 53 54 55 56 57



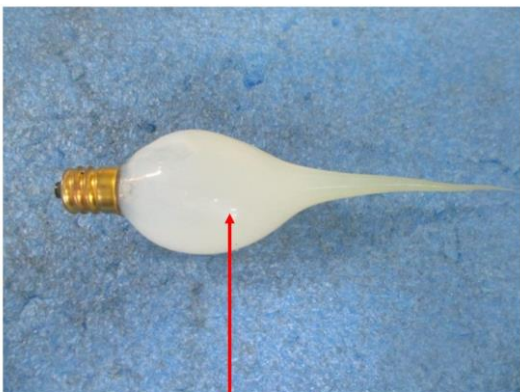
59



60



61



62



63

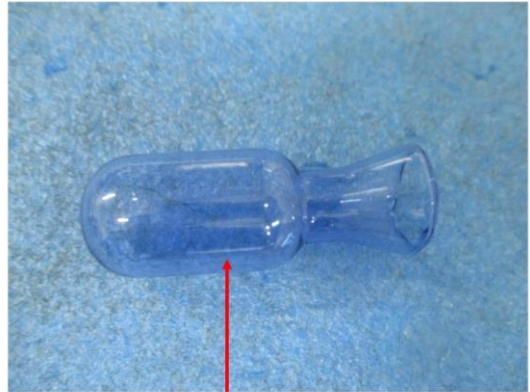


**BUREAU
VERITAS**

LAB NO. : (9324)060-0755-R1
DATE : Apr 12, 2024
PAGE : 10 OF 20



64



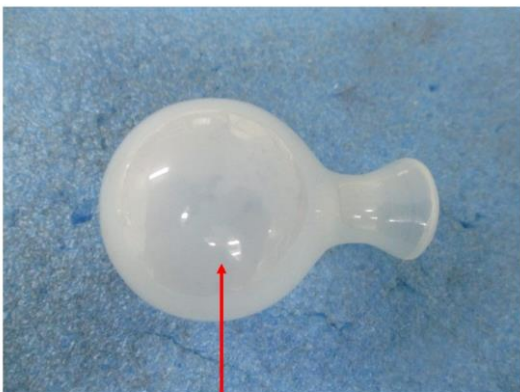
65



66



67



68

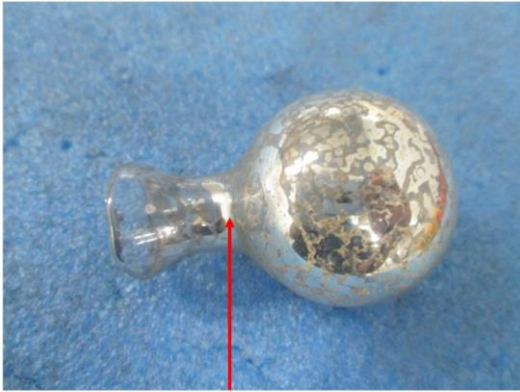


69



**BUREAU
VERITAS**

LAB NO. : (9324)060-0755-R1
DATE : Apr 12, 2024
PAGE : 11 OF 20



70



71

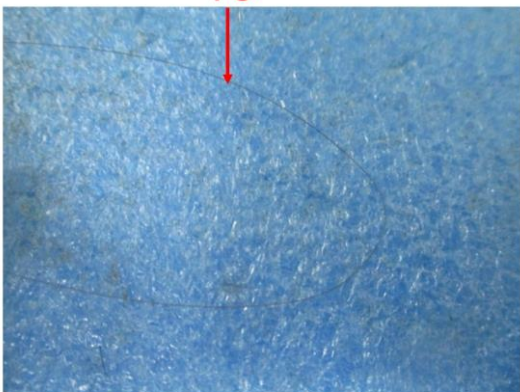


72

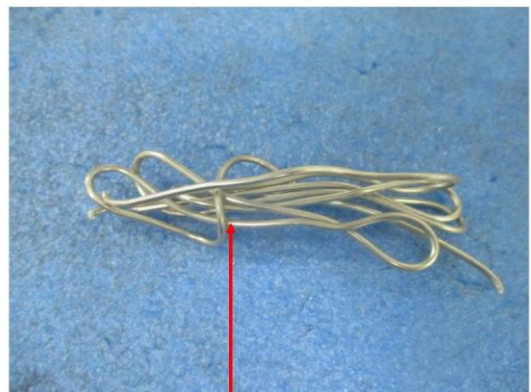
73



74



75



76



**BUREAU
VERITAS**

LAB NO. : (9324)060-0755-R1
DATE : Apr 12, 2024
PAGE : 12 OF 20



77



78



79



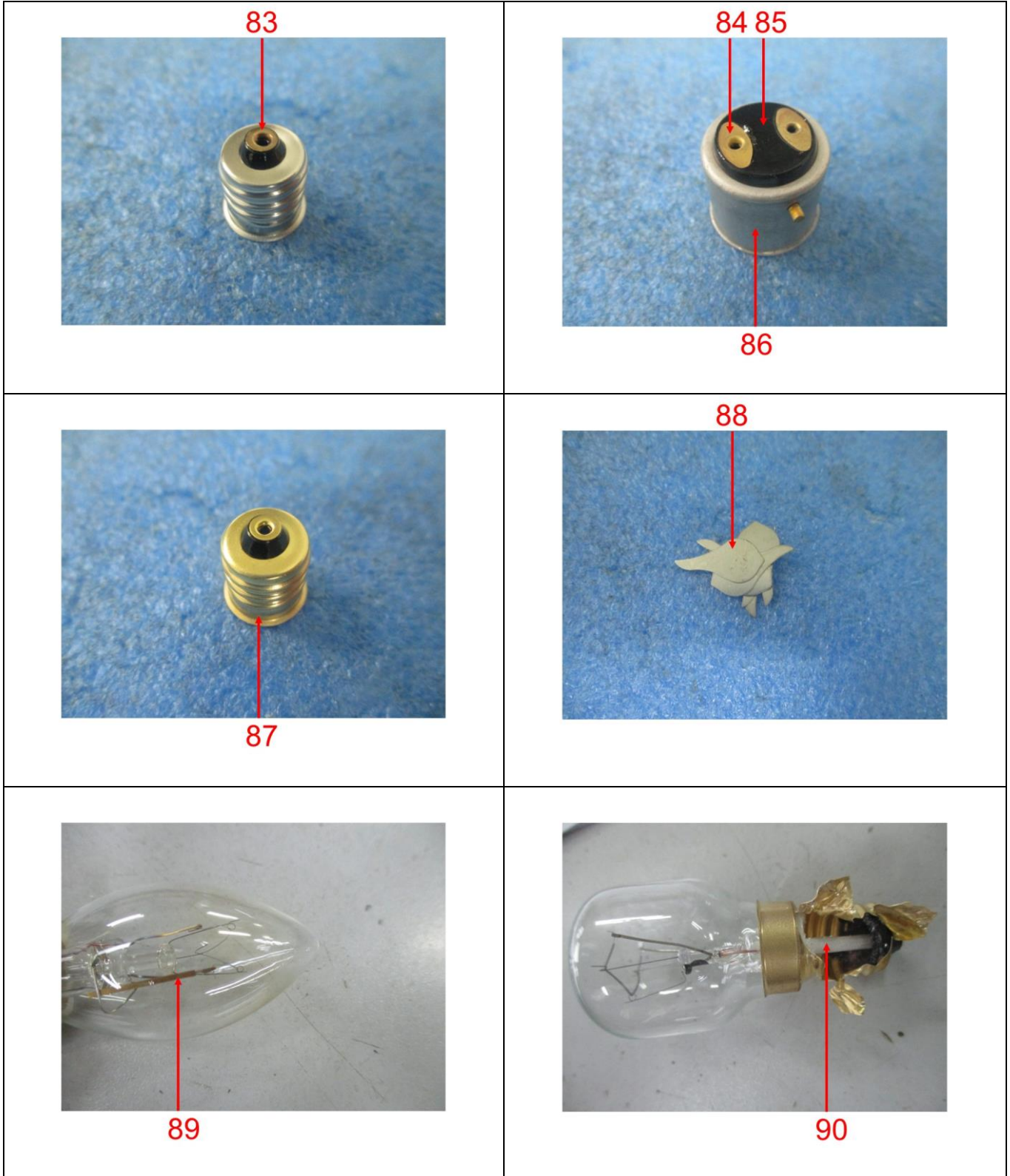
80



81



82





LAB NO. : (9324)060-0755-R1
 DATE : Apr 12, 2024
 PAGE : 14 OF 20

TEST RESULT

Compliance Test - European Parliament and Council Directive 2011/65/EU on the Restriction of the Use of Certain Hazardous Substances in Electrical and Electronic Equipment (RoHS) with its Amendments (EU) 2015/863

Test Method : See Appendix.

Test Item(s)	Item / Component Description(s) + Location(s)	Style(s)
1	White plastic (base, lamp bulb)	-
2	Red plastic (cover, lamp bulb)	-
3	Transparent glass (case, lamp bulb)	-
4	Silvery plastic (inner, lamp bulb)	-
5	Transparent liquid (lamp bulb)	-
6	Translucent powder (lamp bulb)	-
7	Light yellow glue (lamp bulb)	-
8	Golden metal (lamp holder, lamp bulb)	-
9	Yellow glue (case, lamp bulb)	-
10	Silvery metal (lamp holder, lamp bulb)	-
11	Translucent glass (case, lamp bulb)	-
12	Transparent glass with white coating (inner, lamp bulb)	-
13	Silvery metal (pin, lamp bulb)	-
14	Silvery metal (wire, lamp bulb)	-
15	Silvery metal (spring, lamp bulb)	-
16	Beige glue (inner, lamp bulb)	-
17	Silvery die (base, lamp bulb)	-
18	Dark black glass (base, lamp bulb)	-
19	Translucent glass (case, lamp bulb)	-
20	Transparent glass with white coating (case, lamp bulb)	-
21	Black glass (base, lamp bulb)	-
22	White glue (lamp bulb)	-
23	Transparent glass (case, lamp bulb)	-
24	Silvery metal (contact plate, lamp bulb)	-
25	Coppery metal (wire, lamp bulb)	-
26	Blue printed translucent glass (case, lamp bulb)	-
27	Silvery solder (case, lamp bulb)	-
28	Golden metal (lamp holder, lamp bulb)	-
29	Dark beige glue (base, lamp bulb)	-
30	White glass (case, lamp bulb)	-
31	Light green/ beige glue (base, lamp bulb)	-
32	Translucent glass (case, lamp bulb)	-
33	Brown glue (base,, lamp bulb)	-
34	Black glass (base, lamp bulb)	-
35	White glass (case, lamp bulb)	-
36	Light brown glue (base, lamp bulb)	-
37	Transparent glass (case, lamp bulb)	-
38	Black glass (case, lamp bulb)	-
39	White glue (base, lamp bulb)	-
40	Silvery/ translucent glass (case, lamp bulb)	-
41	Transparent glass (case, lamp bulb)	-
42	Silvery metal (base, lamp bulb)	-
43	Translucent glass (case, lamp bulb)	-



**BUREAU
VERITAS**

LAB NO. : (9324)060-0755-R1
DATE : Apr 12, 2024
PAGE : 15 OF 20

44	Silvery metal (pin, lamp bulb)	-
45	White glass (case, lamp bulb)	-
46	Yellow glass (case, lamp bulb)	-
47	Blue glass (case, lamp bulb)	-
48	Pink glass (case, lamp bulb)	-
49	Purple glass (case, lamp bulb)	-
50	Green glass (case, lamp bulb)	-
51	Brown glass (case, lamp bulb)	-
52	Yellow glass (case, lamp bulb)	-
53	Light purple glass (case, lamp bulb)	-
54	Blue glass (case, lamp bulb)	-
55	Light brown glass (case, lamp bulb)	-
56	Green glass (case,, lamp bulb)	-
57	Purple glass (case, lamp bulb)	-
58	Golden metal (connector, lamp bulb)	-
59	Dark silvery metal (lamp holder, lamp bulb)	-
60	Silvery die (base, lamp bulb)	-
61	Black printed silvery metal (contact plate, lamp bulb)	-
62	White soft plastic (case, lamp bulb)	-
63	White glass (case, lamp bulb)	-
64	Transparent glass (case, lamp bulb)	-
65	Blue transparent glass (case, lamp bulb)	-
66	Light blue transparent glass (case, lamp bulb)	-
67	Translucent glass (case, lamp bulb)	-
68	White glass (case, lamp bulb)	-
69	Silvery/ translucent glass (case, lamp bulb)	-
70	Silvery/ transparent glass (case, lamp bulb)	-
71	White glass (case, lamp bulb)	-
72	Coppery metal (wire)	-
73	Silvery metal (pin)	-
74	Dark silvery solder	-
75	Black printed silvery metal (wire)	-
76	Silvery solder	-
77	Green plastic (lamp holder)	-
78	Silvery metal (spring, lamp bulb)	-
79	Beige plastic (powder)	-
80	White plastic (powder)	-
81	Golden metal (contact plate, lamp holder)	-
82	Golden metal (lamp holder)	-
83	Golden metal (contact plate, lamp holder)	-
84	Golden metal (contact plate, lamp holder)	-
85	Black glass (base, lamp bulb)	-
86	Dark silvery metal (base, lamp bulb)	-
87	Golden metal (base, lamp bulb)	-
88	Silvery metal (contact plate, lamp bulb)	-
89	Golden metal (pin, lamp bulb)	-
90	White soft plastic (sleeve, lamp bulb)	-

See Analytes and their corresponding Maximum Allowable Limit in Appendix



**BUREAU
VERITAS**

LAB NO. : (9324)060-0755-R1
DATE : Apr 12, 2024
PAGE : 16 OF 20

Parameter	Result									Conclusion
	Lead (Pb)	Cadmium (Cd)	Mercury (Hg)	Chromium VI (Cr VI)	PBBs & PBDEs	DBP	BBP	DEHP	DIBP	
Unit	mg/kg	mg/kg	mg/kg	mg/kg	mg/kg	mg/kg	mg/kg	mg/kg	mg/kg	-
Test Item	-	-	-	-	-	-	-	-	-	-
1	BL	BL	BL	BL	BL	BL	BL	BL	BL	PASS
2	BL	BL	BL	BL	BL	BL	BL	BL	BL	PASS
3	BL	BL	BL	BL	NA	NA	NA	NA	NA	PASS
4	BL	BL	BL	BL	BL	BL	BL	BL	BL	PASS
5	ND*	ND*	ND*	ND*	ND*	ND*	ND*	ND*	ND*	PASS
6	BL	BL	BL	BL	BL	NA	NA	NA	NA	PASS
7	BL	BL	BL	BL	BL	BL	BL	BL	BL	PASS
8	BL	BL	BL	BL	NA	NA	NA	NA	NA	PASS
9	BL	BL	BL	BL	BL	BL	BL	BL	BL	PASS
10	BL	BL	BL	BL	NA	NA	NA	NA	NA	PASS
11	BL	BL	BL	BL	BL	NA	NA	NA	NA	PASS
12	BL	BL	BL	BL	BL	NA	NA	NA	NA	PASS
13	BL	BL	BL	BL	NA	NA	NA	NA	NA	PASS
14	BL	BL	BL	BL	NA	NA	NA	NA	NA	PASS
15	BL	BL	BL	BL	NA	NA	NA	NA	NA	PASS
16	BL	BL	BL	BL	BL	BL	BL	BL	BL	PASS
17	67.4*	BL	BL	BL	NA	NA	NA	NA	NA	PASS
18	BL	BL	BL	BL	BL	NA	NA	NA	NA	PASS
19	BL	BL	BL	BL	NA	NA	NA	NA	NA	PASS
20	BL	BL	BL	BL	NA	NA	NA	NA	NA	PASS
21	BL	BL	BL	BL	BL	NA	NA	NA	NA	PASS
22	BL	BL	BL	BL	BL	BL	BL	BL	BL	PASS
23	BL	BL	BL	BL	BL	NA	NA	NA	NA	PASS
24	BL	BL	BL	Negative*	NA	NA	NA	NA	NA	PASS
25	BL	BL	BL	BL	NA	NA	NA	NA	NA	PASS
26	BL	BL	BL	BL	NA	NA	NA	NA	NA	PASS
27	BL	BL	BL	BL	NA	NA	NA	NA	NA	PASS
28	BL	BL	BL	BL	NA	NA	NA	NA	NA	PASS
29	BL	BL	BL	BL	BL	BL	BL	BL	BL	PASS
30	BL	BL	BL	BL	NA	NA	NA	NA	NA	PASS
31	BL	BL	BL	BL	BL	BL	BL	BL	BL	PASS
32	BL	BL	BL	BL	NA	NA	NA	NA	NA	PASS
33	BL	BL	BL	BL	BL	BL	BL	BL	BL	PASS
34	BL	BL	BL	BL	BL	NA	NA	NA	NA	PASS
35	BL	BL	BL	BL	NA	NA	NA	NA	NA	PASS
36	BL	BL	BL	BL	BL	BL	BL	BL	BL	PASS
37	BL	BL	BL	BL	NA	NA	NA	NA	NA	PASS
38	BL	BL	BL	BL	BL	NA	NA	NA	NA	PASS
39	BL	BL	BL	BL	BL	BL	BL	BL	BL	PASS
40	BL	BL	BL	BL	BL	NA	NA	NA	NA	PASS
41	BL	BL	BL	BL	BL	NA	NA	NA	NA	PASS
42	BL	BL	BL	BL	NA	NA	NA	NA	NA	PASS
43	BL	BL	BL	BL	NA	NA	NA	NA	NA	PASS
44	BL	BL	BL	BL	NA	NA	NA	NA	NA	PASS
45	BL	BL	BL	BL	NA	NA	NA	NA	NA	PASS
46	BL	BL	BL	BL	NA	NA	NA	NA	NA	PASS
47	BL	BL	BL	BL	NA	NA	NA	NA	NA	PASS



LAB NO. : (9324)060-0755-R1
 DATE : Apr 12, 2024
 PAGE : 17 OF 20

Parameter	Result									Conclusion
	Lead (Pb)	Cadmium (Cd)	Mercury (Hg)	Chromium VI (Cr VI)	PBBs & PBDEs	DBP	BBP	DEHP	DIBP	
Unit	mg/kg	mg/kg	mg/kg	mg/kg	mg/kg	mg/kg	mg/kg	mg/kg	mg/kg	-
Test Item	-	-	-	-	-	-	-	-	-	-
48	BL	BL	BL	BL	NA	NA	NA	NA	NA	PASS
49	BL	BL	BL	BL	NA	NA	NA	NA	NA	PASS
50	BL	BL	BL	BL	NA	NA	NA	NA	NA	PASS
51	BL	BL	BL	BL	NA	NA	NA	NA	NA	PASS
52	BL	BL	BL	BL	BL	NA	NA	NA	NA	PASS
53	BL	BL	BL	BL	BL	NA	NA	NA	NA	PASS
54	BL	BL	BL	BL	BL	NA	NA	NA	NA	PASS
55	BL	BL	BL	BL	BL	NA	NA	NA	NA	PASS
56	BL	BL	BL	BL	BL	NA	NA	NA	NA	PASS
57	BL	BL	BL	BL	BL	NA	NA	NA	NA	PASS
58	BL	BL	BL	BL	NA	NA	NA	NA	NA	PASS
59	BL	BL	BL	BL	NA	NA	NA	NA	NA	PASS
60	BL	BL	BL	BL	NA	NA	NA	NA	NA	PASS
61	BL	BL	BL	BL	NA	NA	NA	NA	NA	PASS
62	BL	BL	BL	BL	BL	BL	BL	BL	BL	PASS
63	BL	BL	BL	BL	BL	NA	NA	NA	NA	PASS
64	BL	BL	BL	BL	BL	NA	NA	NA	NA	PASS
65	BL	BL	BL	BL	BL	NA	NA	NA	NA	PASS
66	BL	BL	BL	BL	BL	NA	NA	NA	NA	PASS
67	BL	BL	BL	BL	BL	NA	NA	NA	NA	PASS
68	BL	BL	BL	BL	BL	NA	NA	NA	NA	PASS
69	BL	BL	BL	BL	BL	NA	NA	NA	NA	PASS
70	BL	BL	BL	BL	BL	NA	NA	NA	NA	PASS
71	BL	BL	BL	BL	BL	NA	NA	NA	NA	PASS
72	BL	BL	BL	BL	NA	NA	NA	NA	NA	PASS
73	BL	BL	BL	BL	NA	NA	NA	NA	NA	PASS
74	>1500 [#]	BL	BL	BL	NA	NA	NA	NA	NA	PASS
75	BL	BL	BL	BL	NA	NA	NA	NA	NA	PASS
76	BL	BL	BL	BL	NA	NA	NA	NA	NA	PASS
77	BL	BL	BL	BL	ND*	BL	BL	BL	BL	PASS
78	BL	BL	BL	BL	NA	NA	NA	NA	NA	PASS
79	BL	BL	BL	BL	BL	BL	BL	BL	BL	PASS
80	BL	BL	BL	BL	BL	BL	BL	BL	BL	PASS
81	BL	BL	BL	BL	NA	NA	NA	NA	NA	PASS
82	BL	BL	BL	BL	NA	NA	NA	NA	NA	PASS
83	BL	BL	BL	BL	NA	NA	NA	NA	NA	PASS
84	BL	BL	BL	BL	NA	NA	NA	NA	NA	PASS
85	BL	BL	BL	BL	NA	NA	NA	NA	NA	PASS
86	BL	BL	BL	Negative*	NA	NA	NA	NA	NA	PASS
87	BL	BL	BL	BL	NA	NA	NA	NA	NA	PASS
88	BL	BL	BL	Negative*	NA	NA	NA	NA	NA	PASS
89	BL	BL	BL	BL	NA	NA	NA	NA	NA	PASS
90	BL	BL	BL	BL	BL	BL	BL	BL	BL	PASS

Note / Key :

ND = Not detected
 BL = Below Limit

“>” = Greater than
 NA = Not applicable

“<” = Less than
 EX= Exempted



LAB NO. : (9324)060-0755-R1
DATE : Apr 12, 2024
PAGE : 18 OF 20

NR = Not requested

mg/kg = milligram(s) per kilogram = ppm = part(s) per million

Detection Limit: See Appendix.

Remark :

- The testing approach is listed in table of Appendix.
- * denotes as reported result(s) was (were) performed by wet chemistry method. Others were screened by XRF. For XRF screening, the result(s) of Cr VI was (were) reported as total chromium and the result(s) of PBBs and PBDEs was (were) reported as total bromine. Also, the XRF result(s) may be different to the actual content based on various factors including, but not limit to, sample size, thickness, area, non-uniformity composition, surface flatness.
- Only selected example(s) is (are) indicated on the photograph(s) in Comment.
- According to European Parliament and Council Directive 2011/65/EU, Article 5 “Adaptation of the Annexes to scientific and technical progress”, exemption(s) should be granted to the materials and components of Test Item(s) in the lists in Annexes III and IV of this directive.
- #According to Annex III of Directive (EU)2015/863 Amendment of European Parliament and Council Directive 2011/65/EU, exemptions were granted a few materials and Clause 7(a) is reiterated here “Lead in high melting temperature type solders (i.e. lead-based alloys containing 85 % by weight or more lead).”. Test Item(s) < 74 > was (were) claimed as is by client (received as is). Therefore, this (these) Test Item(s) containing the found lead level should be exempted.



LAB NO. : (9324)060-0755-R1
 DATE : Apr 12, 2024
 PAGE : 19 OF 20

APPENDIX

List of Analytes and their Corresponding Test Methods, Detection Limit and Maximum Allowable Limit [Compliance Test for European Parliament and Council Directive 2011/65/EU with its Amendments (EU) 2015/863] :

No.	Name of Analyte(s)	Detection Limit (mg/kg)				Maximum Allowable Limit (mg/kg)
		X-ray fluorescence (XRF) ^[a]			Wet Chemistry	
		Plastic	Metallic / glass / ceramic	Others		
1	Lead (Pb)	100	200	200	10 ^[b]	1000
2	Cadmium (Cd)	50	50	50	10 ^[b]	100
3	Mercury (Hg)	100	200	200	10 ^[c]	1000
4	Chromium (Cr)	100	200	200	NA	NA
5	Chromium VI (Cr VI)	NA	NA	NA	3 ^[g, h] / 10 ^[d] / See ^[e, i]	1000 / Negative ^[i]
6	Bromine (Br)	200	NA	200	NA	NA
7	Polybromobiphenyls (PBBs) - Bromobiphenyl (MonoBB) - Dibromobiphenyl (DiBB) - Tribromobiphenyl (TriBB) - Tetrabromobiphenyl (TetraBB) - Pentabromobiphenyl (PentaBB) - Hexabromobiphenyl (HexaBB) - Heptabromobiphenyl (HeptaBB) - Octabromobiphenyl (OctaBB) - Nonabromobiphenyl (NonaBB) - Decabromobiphenyl (DecaBB)	NA	NA	NA	Each 50 ^[f]	Sum 1000
8	Polybromodiphenyl ethers (PBDEs) - Bromodiphenyl ether (MonoBDE) - Dibromodiphenyl ether (DiBDE) - Tribromodiphenyl ether (TriBDE) - Tetrabromodiphenyl ether (TetraBDE) - Pentabromodiphenyl ether (PentaBDE) - Hexabromodiphenyl ether (HexaBDE) - Heptabromodiphenyl ether (HeptaBDE) - Octabromodiphenyl ether (OctaBDE) - Nonabromodiphenyl ether (NonaBDE) - Decabromodiphenyl ether (DecaBDE)	NA	NA	NA	Each 50 ^[f]	Sum 1000
9	Dibutyl phthalate (DBP) Butyl benzyl phthalate (BBP) Di-2-ethylhexyl phthalate (DEHP) Diisobutyl phthalate (DIBP)	NA	NA	NA	Each 500 ^[j]	Each 1000
NA = Not applicable IEC = International Electrotechnical Commission ^[a] Test method with reference to International Standard IEC 62321-3-1: 2013. ^[b] Test method with reference to International Standard IEC 62321-5: 2013. ^[c] Test method with reference to International Standard IEC 62321-4: 2013+AMD1: 2017 CSV. ^[d] Polymers and Electronics - Test method with reference to International Standard IEC 62321-7-2: 2017. ^[e] Metal - Test method with reference to International Standard IEC 62321-7-1: 2015. ^[f] Test method with reference to International Standard IEC 62321-6: 2015. ^[g] Leather - Test method International Standard ISO 17075: 2017. ^[h] Other Than Metal, Leather, Polymers and Electronics - Test method with reference to International Standard ISO 17075: 2017. ^[i] Result(s) of Cr VI for metallic material(s) was (were) expressed in term of positive and negative. Negative means the absence of Cr VI on the tested areas and the result(s) was (were) regarded as in compliance with European Parliament and Council Directive 2011/65/EU, Article 4(1). While, positive means the presence of Cr VI on tested areas and the result(s) was (were) regarded as in conflict with European Parliament and Council Directive 2011/65/EU, Article 4(1). ^[j] Test method with reference International Standard IEC 62321-8: 2017.						
Testing Approach [Compliance Test for European Parliament and Council Directive 2011/65/EU] :						
The testing approach was with reference to the following document(s).						
1	International Standards IEC 62321-1: 2013 and IEC 62321-2: 2021					
2	"RoHS Enforcement Guidance Document Version 1" by EU RoHS Enforcement Authorities Informal Network. (May 2006)					
3	"RoHS Regulations - Government Guidance Notes" by United Kingdom Department for Business Innovation & Skills. (February 2011)					
4	"Final Report to RoHS substances (Hg, Pb, Cr(VI), Cd, PBB and PBDE) in electrical and electronic equipment in Belgium" by Belgium Federal Public Service Health, Food Chain Safety and Environment. (November 2005)					



LAB NO. : (9324)060-0755-R1
DATE : Apr 12, 2024
PAGE : 20 OF 20

AMENDMENT DETAILS

No.	Changes
1	Revise conclusion.

END